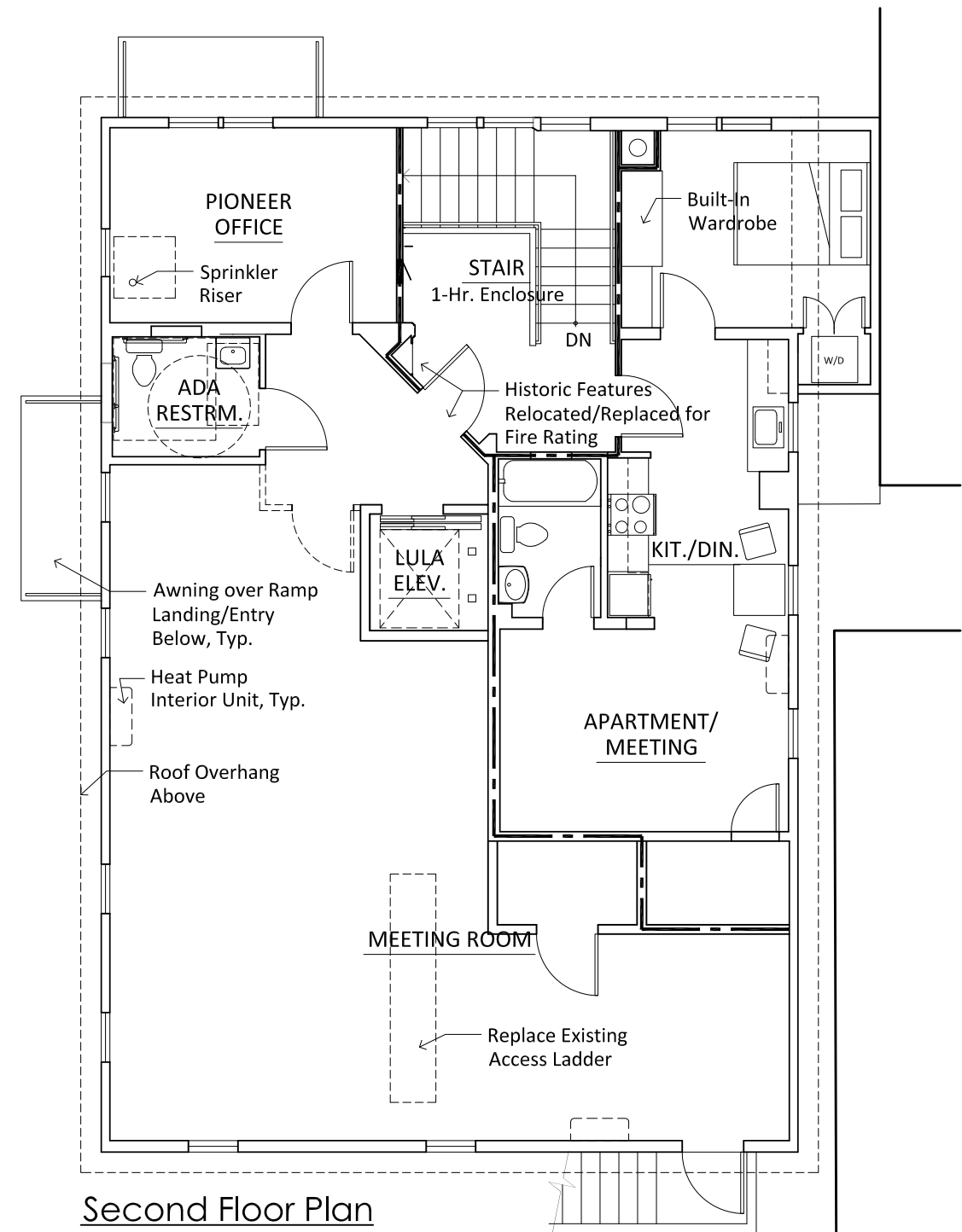


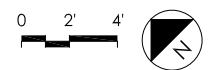
First Floor Plan

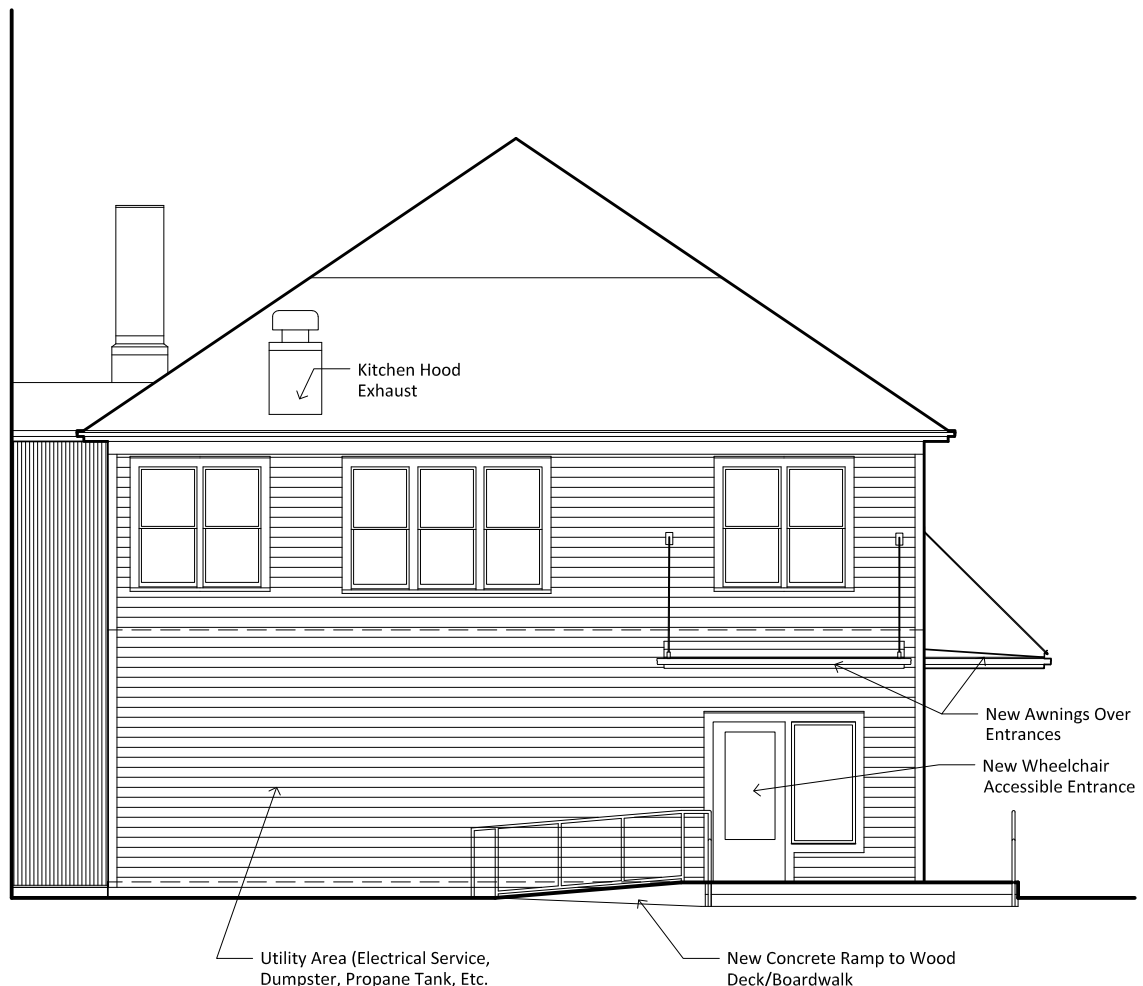


Second Floor Plan

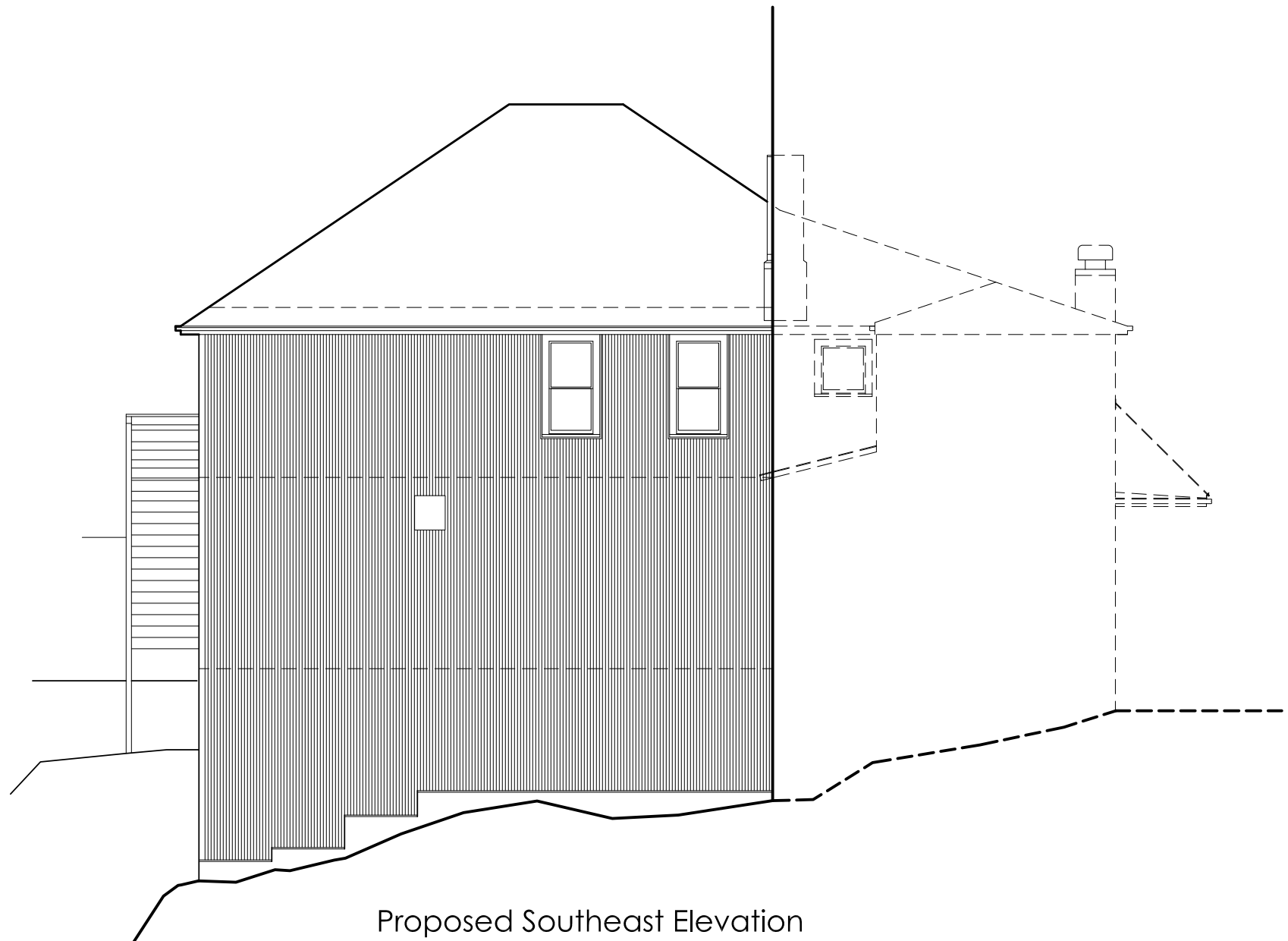
OPTION A-1 NOTES

- 1) This plan retains meeting space on both floors. These flexible spaces are suited to many of the envisioned uses, including Pioneer and rental social gatherings and meetings, exhibit/gallery space, and offices.
- 2) A LULA elevator is shown. An elevator machine room, shallow pit, and overhead operating space are required.
- 3) A commercial kitchen is shown on the first floor.
- 4) A 1-bedroom apartment is included in the second floor plan. The apartment requires fire separation from other uses, and a fire-protected exit path. The apartment could be arranged to be used as meeting space when unoccupied, or rented as office space.

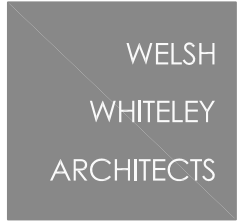




Proposed Northeast Elevation

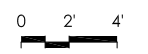


Proposed Southeast Elevation



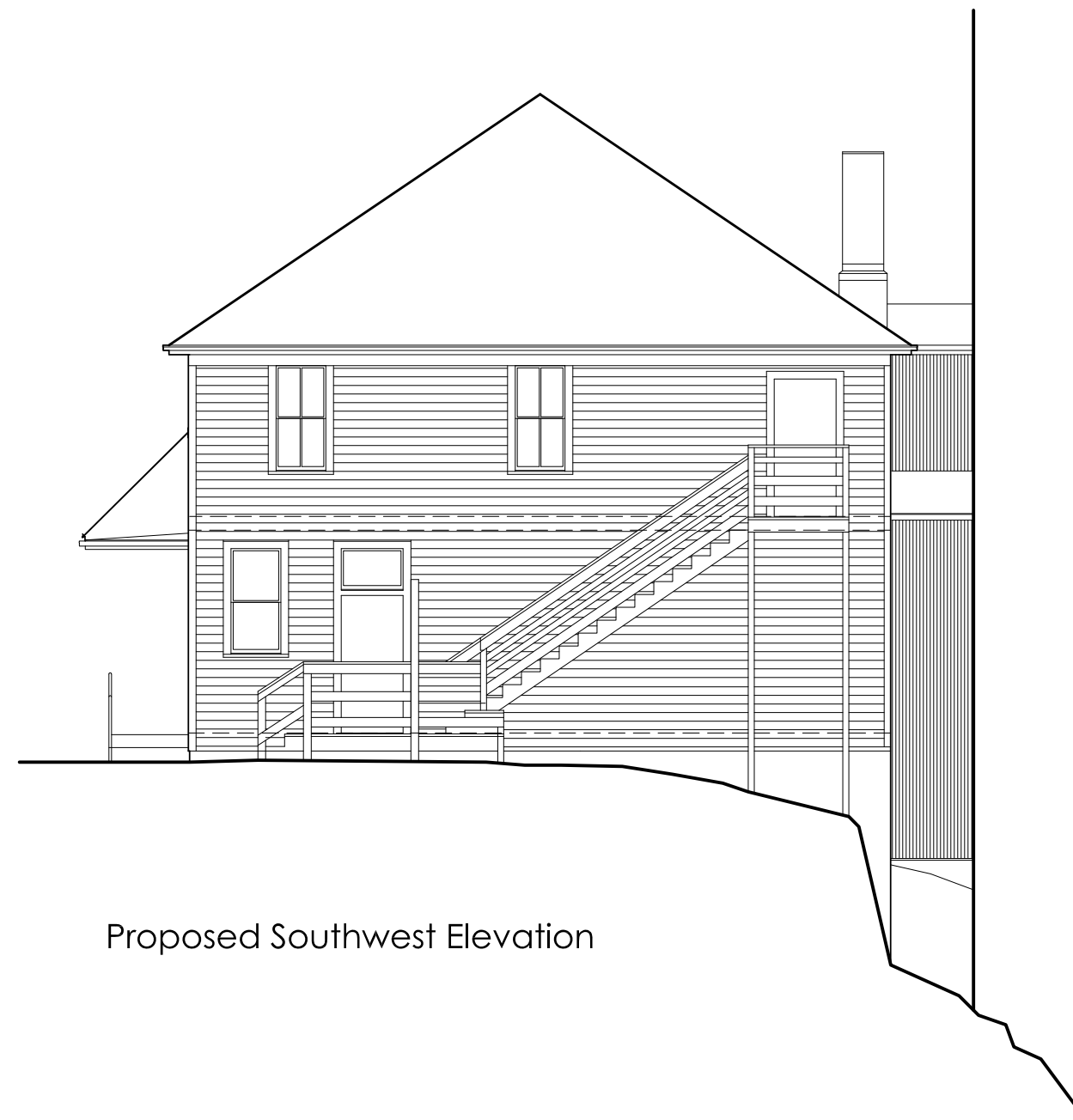
# Pioneer Hall Conceptual Elevations

327 BAWDEN STREET KETCHIKAN, ALASKA 99901 Tel: (907) 225-2412 Fax: (907) 225-2422 Oct. 28, 2022





Proposed Northwest Elevation



Proposed Southwest Elevation



# Pioneer Hall - Conceptual Elevations

327 BAWDEN STREET KETCHIKAN, ALASKA 99901 Tel: (907) 225-2412 Fax: (907) 225-2422 Oct. 28, 2022

